

Canada & US Northwest Regional Church Alive Summit

May 12–15



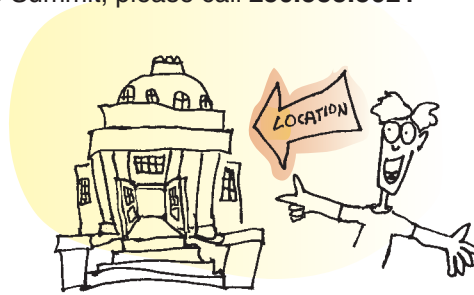
GENERAL EVENT INFORMATION

QUESTIONS

For general questions, please email us at summit@victoriachurch.ca
For questions on the day of the Summit, please call **250.588.3621**

SUMMIT LOCATION

First Church Victoria
1205 Pandora Ave.
(at Chambers Street)
Victoria, B.C.
victoriachurch.ca



HOTELS

[Click here](#) for online map of local hotels, B&Bs, and hostels—or go to victoriachurch.ca/summit

Queen Victoria Hotel
655 Douglas St
Victoria, B.C.
qvhotel.com

For more hotels, visit: expedia.ca
Type “Victoria (and vicinity) Hotels”
into the search box

For B&Bs,
visit bestbnbvictoria.com

OTHER ACCOMMODATION

Wayside House, our local Christian Science nursing facility, offers six Bed & Breakfast Rooms, all with ensuite baths. To make a reservation, phone 250.598.4521, extension 1.

RESTAURANTS

[Click here for online map](#) of local restaurants,
or go to victoriachurch.ca/summit

Eats within 5 minutes walking distance of church:



Mount Royal Bagel Factory
6-1115 North Park St
Victoria BC, V8T 1C7
(250) 380-3588

Bubby Rose's Bakery
Baked goods and deli sandwiches
1022 Cook Street.
bubbyrosesbakery.com

Sally Bun
Baked goods and deli sandwiches
1030 Fort Street,
(250) 384-1899

Cafe Ceylon
Sri Lankan, Thai, Malaysian, East
Indian, Japanese and Korean cuisines
1175 Cook Street,
(250) 388-4949

Pluto's Roadhouse Cuisine
1150 Cook Street
(250) 385-4747

Tooks On Cook
Baked goods and deli sandwiches
1031 Cook Street,
(250) 386-5512

Passero's Greek
1102 Yates Street,
(250) 384-6474

Cook N' Pan Polish Delicatessen
1725 Cook Street
Victoria, BC
(250) 385-5509
cooknpan.ca/contact.html

Little Thai Place
1839 Cook St.
(250) 477-8900
littletaiplace.com

[Click here for online map](#) showing location of the Victoria church, hotels, and local restaurants.

WEATHER

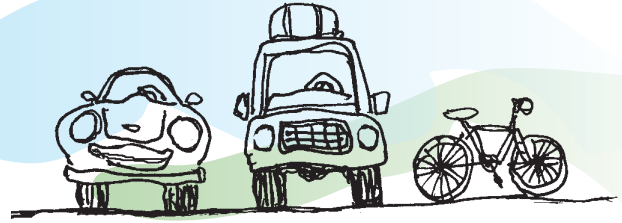
Victoria, B.C. boasts the mildest climate in Canada. Victoria receives an average of 2,183 hours of sunshine each year. In May, temperatures range from 8°C (46°F) to 16°C (61°F). *It can rain in May, so it's a good idea to be prepared for that.*

PARKING

Beside the church, off Chambers Street
Off Chambers Street at Johnson
Free street parking (on the diagonal) off Harris Green

TRANSPORTATION

Attendees will need to make their own transportation arrangements to the church (the summit location).



From Victoria Airport

AKAL Airporter victoriaairportshuttle.com

Shuttle buses travel between the airport and downtown hotels. Cost ranges from \$19–21 per person, one way, depending on number of people in your group. You can reserve ahead on the Airporter website. A shuttle runs every 30 minutes.

Yellow Cab empresstaxi.com

Taxi cost: approximately \$56 from the airport to downtown hotels



Bus bctransit.com/regions/vic

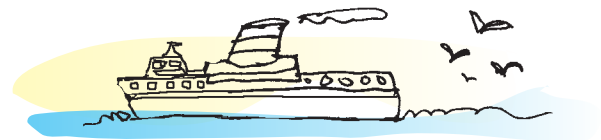
Buses leave from the airport periodically throughout the day. The fastest way to get to downtown using public transportation is to take the airport shuttle to the McTavish Park 'N' Ride (\$3 for a short 3–5 minute ride). Then catch a bus (#70 express) to downtown. The express bus comes every 30 minutes. Bus numbers 71, 72, and 73 also go to downtown— but they're not express. Cost for the bus is \$2.50 and will take approximately 45 minutes (if you've caught the express).

Rental car from airport

The airport is about 28 km from downtown. It takes 30–45 minutes to drive into town, depending on traffic. Follow the exit signs from the airport; you'll be on Willingdon Road. Enter the roundabout (for those of you from the US—"traffic circle" or "rotary"), take the second exit, and continue on Willingdon, which will turn into Canora Road, which will take you onto the Pat Bay Highway (#19). Continue on the highway (it turns into Blanshard Street on the outskirts of town) until you come to Douglas. If you want to drive directly to the church, turn left off Blanshard onto Johnson (one block after Pandora Ave). Drive up Johnson. Cross Cook Street. Chambers Street is the next left. Turn left onto Chambers. The church is one block up, on the right.

FROM TSAWWASSEN FERRY TERMINAL (ON THE MAINLAND) TO VICTORIA

In order to be at the summit prior to 7PM Thursday evening, you'll need to be on the 5PM ferry (or earlier). Allow at least an hour to get to Tsawwassen Ferry Terminal from downtown Vancouver, if you are driving (more time if it's rush hour). You may want to consider making a reservation to ensure you get on the ferry of your choice. Visit bcferries.com/res. If you're driving onto the ferry—with no reservation—be in the ferry line-up at least an hour early. If you're driving on the ferry—with a reservation—be there at least half an hour early, or you'll lose your reservation. If you're walking on the ferry at Tsawwassen, be there at least half an hour early.



From Vancouver Bus Depot to Victoria pacificcoach.com

Pacific Coach Lines bus will take you from the Vancouver Bus Depot (and other stops in Vancouver) to the Victoria Bus Depot (downtown Victoria near hotels). The cost for this trip is \$48 one way (round-trip tickets are available and cost less than two one-way tickets) and includes the cost of the ferry. Also, if you've walked on the ferry at Tsawwassen, you can purchase a ticket to get on this bus for a ride to downtown Victoria. The cost is approx. \$17 and can be purchased from the bus driver during the first 30 minutes of the ferry ride. Listen for announcements on the ferry for the location of the ticket desk.

From the Ferry, By Bus, to Victoria Victoria Regional Transit bctransit.com/regions/vic

There is an express bus from the ferry terminal to downtown Victoria. The #70 bus leaves every 30 minutes, on the hour and half hour. The cost is \$2.50. The ride is 50 minutes. There are other buses to downtown, but they stop many times on route.

From the Ferry, By Car, to Victoria

The ferry terminal is about 31 km from the hotel and takes about 35–50 minutes (depending on traffic) to drive into town. The ferry exits directly onto the Pay Bay Hwy (#19). Continue on this highway (it turns into Blanshard Street on the outskirts of town) until you come (after making a wide, right-angle curve) to Douglas.

If you want to drive directly to the church, turn left off Blanshard St. onto Johnson (one block after Pandora Avenue). Drive up Johnson and cross Cook Street. Chambers Street is the next left. Turn left on Chambers. The church is one block up, on the right.

FROM “UP ISLAND” (NORTH OF VICTORIA) BY CAR

Drive into Victoria on Highway 1. Highway 1 turns into Douglas Street. Follow Douglas into town. Turn left on Johnson Street (one block after Pandora Avenue). Drive up Johnson and cross Cook St. Chambers Street is the next left. Turn left on Chambers. The church is one block up, on the right.

OTHER

You may consider the following transportation methods if you are coming from the US. Check out the company websites for more information. Some ferries and float planes arrive in the Victoria Inner Harbour, a few blocks from many hotels.

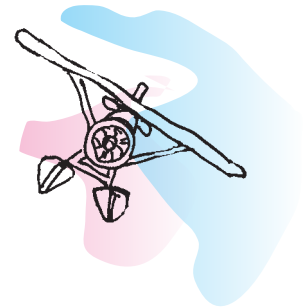
Victoria Vacations (high speed passenger ferry—2 ¾ hours from Seattle) clippervacations.com

Kenmore Air (Float plane from Lake Union in Seattle—1 hour) kenmoreair.com

Coho ferry (Port Angeles, WA—90 minutes trip) cohoferry.com/main

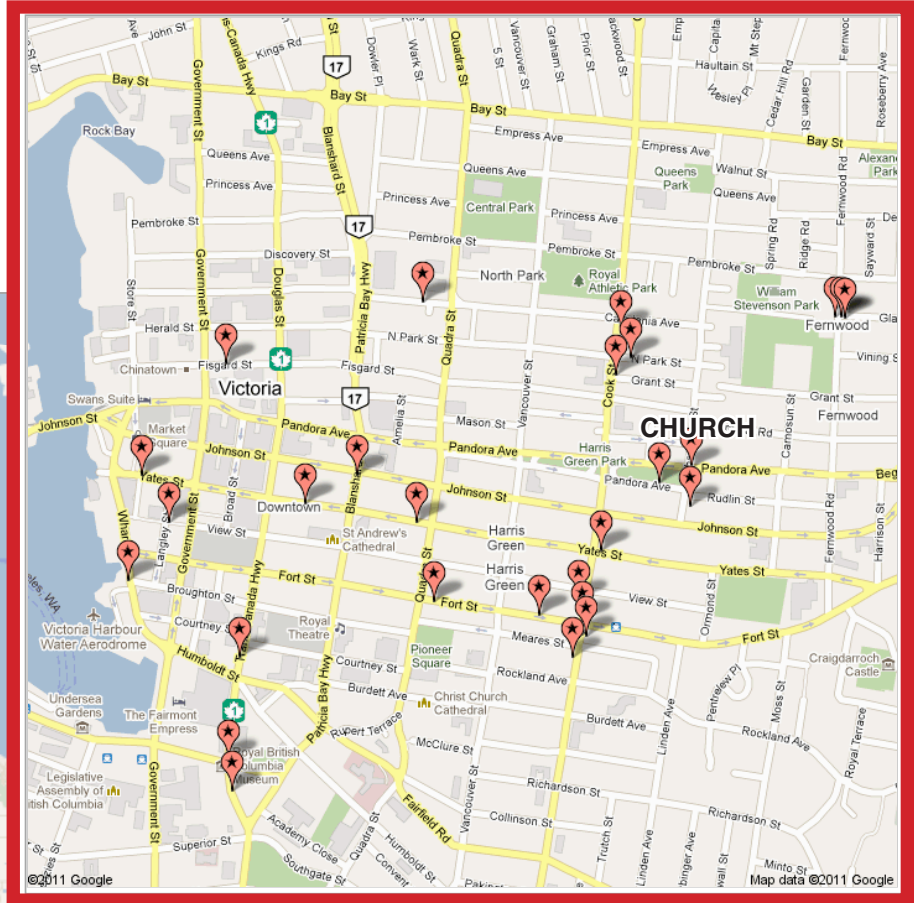
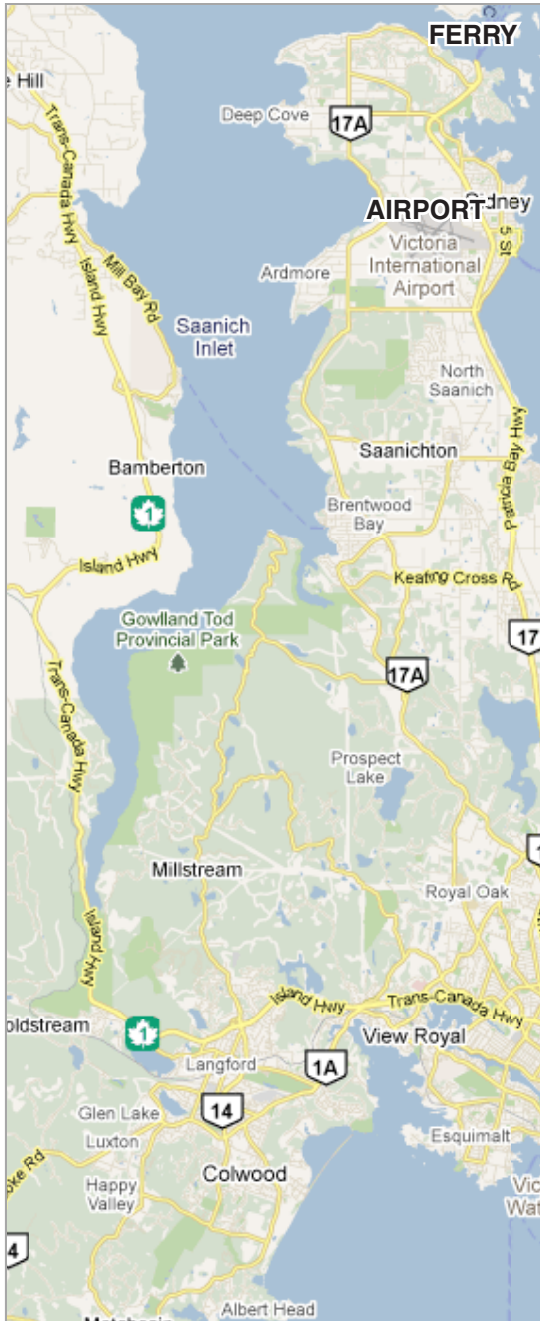
NEED HELP WITH TRANSPORTATION COSTS?

Keep checking victoriachurch.ca/summit for details.



Click here

for online map showing location of the Victoria church, hotels, and local restaurants



Canada & US Northwest Regional Church Alive Summit

Good restaurants, close to the church, where the summit is being held